

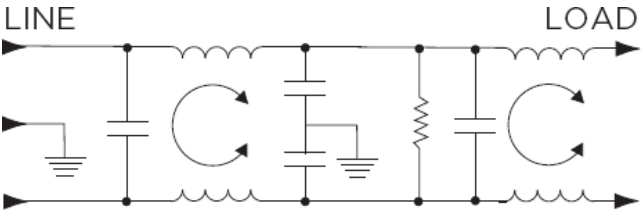
Features

- General purpose filtering
- High CM & DM attenuation
- Rated up to 20A
- Choice of termination

Applications

- Electrical and Electronic equipment
- Consumer goods
- Home appliances
- Office equipment

Typical Circuit Diagram



Approvals & Compliances



Technical Specifications

Maximum Continuous Operating Voltage	250 VAC Max
Operating Frequency	50/60Hz
Rated Current	3to 20A @40°C
Temperature range	-10°C to +40°C
High Potential Test Voltage	Line to Ground: 2250 VDC Line to Line: 1450 VDC

Selection Table

AMI Designation	Input/output Style				Current Rating	Inductance	Capacitance		Resistor	Leakage Current @ 120 VAC 60Hz/250 VAC 50 Hz	TIL Insertion Loss	Case Style
	Available Part Numbers	6.3mm Spade Terminals	Wire Leads	Threaded Bolts			IEC/ 6.3mm Spade Terminals	mH				
nF					pF							
AMI-M12B-1-3-B	1	-	-	-	3	14.12	740	2800	330	0.21/0.36	001	A
AMI-M12B-3-3-B	-	3	-	-	3	14.12	740	2800	330	0.21/0.36	001	C
AMI-M12B-1-6-B	1	-	-	-	6	17.46	740	2800	330	0.21/0.36	002	A
AMI-M12B-3-6-B	-	3	-	-	6	17.46	740	2800	330	0.21/0.36	002	C
AMI-M12B-1-7-B	1	-	-	-	7	14.6	2000	2800	165	0.21/0.36	003	A
AMI-M12B-3-7-B	-	3	-	-	7	14.6	2000	2800	165	0.21/0.36	003	C
AMI-M12B-1-10-B	1	-	-	-	10	14.26	740	2800	330	0.21/0.36	004	A
AMI-M12B-3-10-B	-	3	-	-	10	14.26	740	2800	330	0.21/0.36	004	A
AMI-M12B-1-12-B	1	-	-	-	12	7.88	2000	2800	165	0.21/0.36	005	A
AMI-M12B-3-12-B	-	3	-	-	12	7.88	2000	2800	165	0.21/0.36	005	D
AMI-M12B-1-20-B	1	-	-	-	20	4.56	2000	2800	165	0.21/0.36	006	B
AMI-M12B-6-20-B	-	-	6	-	20	4.56	2000	2800	165	0.21/0.36	006	E
AMI-M12B-1-20-C	1	-	-	-	20	4.56	2000	10000	165	0.73/1.27	007	B
AMI-M12B-6-20-C	-	-	6	-	20	4.56	2000	10000	165	0.73/1.27	007	E

*(M) = Metric Inserts

Case Styles

STYLE A

Typical Dimensions:

Line/Load Terminals (4):	.250 [6.3] with .07 [1.8] Dia. hole
Ground Terminal (1):	.250 [6.3] with .07 x .16 [1.8 x 3.8] slot
Mounting Holes (2):	.188 [4.78] Dia.

STYLE B

Typical Dimensions:

Line/Load Terminals (4):	.250 [6.3] with .07 [1.8] Dia. hole
Ground Terminal (1):	.250 [6.3] with .07 x .16 [1.8 x 3.8] slot
Mounting Holes (2):	.188 [4.78] Dia.

STYLE C

Typical Dimensions:

Wire leads (5):	4.0 [101.6] Min, AWG18
Mounting Holes (2):	.188 [4.78] Dia.

STYLE D

Typical Dimensions:

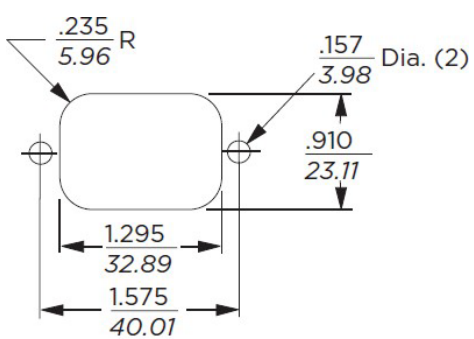
Load Terminals (2):	.250 [6.3] with .07 [1.8] Dia. hole
Line Inlet (1):	IEC 60320-1 C14
EP7 Tapped Inserts (2):	6-32 x 1/4
EP7M Tapped Inserts (2):	M3 x .5

STYLE E

Typical Dimensions:

Terminals (5):	8-32, Torque 18 lbf-in. [2.03 N-m] max. ± 2 [22]
Mounting Holes (2):	.188 [4.78] Dia.

Recommended Panel Cutout



Tolerance ± .005 [0.13]

Case Dimensions

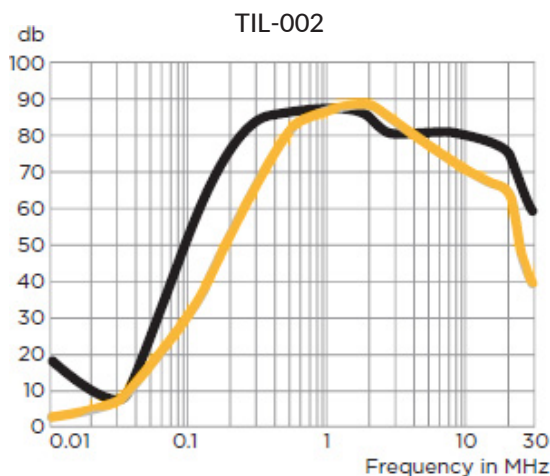
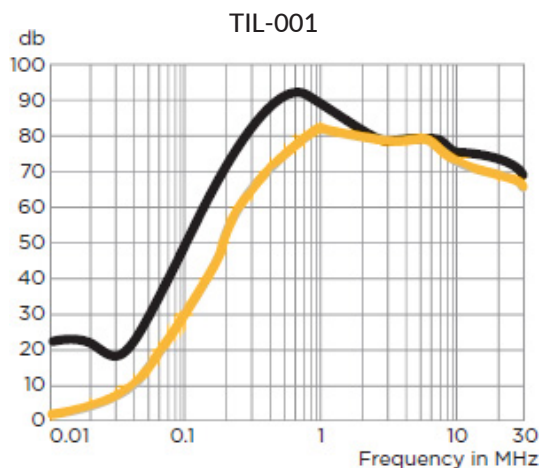
Model Number	A max	B max	C max	D $\begin{smallmatrix} -.015 \\ .38 \end{smallmatrix}$	E max
AMI-M12B-1-3	3.85"/97.8mm	2.07"/52.6mm	1.78"/45.2mm	2.938"/74.63mm	3.35"/85.1mm
AMI-M12B-3-3	2.56"/65.0mm	2.07"/52.6mm	1.78"/45.2mm	2.938"/74.63mm	3.35"/85.1mm
AMI-M12B-1-6	6.62"/168.1mm	2.07"/52.6mm	2.28"/57.9mm	5.625"/142.8mm	6.03"/153.2mm
AMI-M12B-3-6	5.33"/135.4mm	2.07"/52.6mm	2.28"/57.9mm	5.625"/142.8mm	6.03"/153.2mm
AMI-M12B-1-7	4.79"/121.7mm	2.07"/52.6mm	1.53"/38.9mm	3.947"/10.25mm	4.33"/109.98mm
AMI-M12B-3-7	3.50"/88.9mm	2.07"/52.6mm	1.53"/38.9mm	3.947"/10.25mm	4.33"/109.98mm
AMI-M12B-1-10	6.62"/168.1mm	2.07"/52.6mm	2.78"/70.6mm	5.625"/142.8mm	6.03"/153.2mm
AMI-M12B-3-10	5.35"/135.9mm	2.03"/52.6mm	2.78"/70.6mm	5.625"/142.8mm	6.03"/153.2mm
AMI-M12B-1-12	4.97"/126.2mm	1.78"/45.2mm	1.78"/45.2mm	4.063"/103.2mm	4.46"/113.28mm
AMI-M12B-3-12	3.624"/92.05mm	1.78"/45.2mm	1.78"/45.2mm	4.063"/103.2mm	4.46"/113.28mm
AMI-M12B-1-20	4.95"/125.7mm	1.8"/45.7mm	1.8"/45.7mm	4.063"/103.2mm	4.47"/113.5mm
AMI-M12B-6-20	5.09"/127.3mm	1.78"/45.2mm	1.78"/45.2mm	4.063"/103.2mm	4.46"/113.3mm

±0.02 [0.5]

Typical Insertion Loss

According to CISPR17 in 50 Ω system

— Common Mode / Asymmetrical (L-G)
— Differential Mode / Symmetrical (L-L)



Typical Insertion Loss

According to CISPR17 in 50 Ω system

— Common Mode / Asymmetrical (L-G)
 — Differential Mode / Symmetrical (L-L)

