

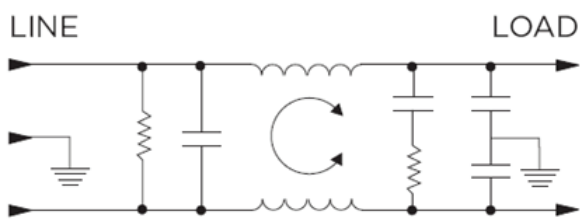
Features

- General purpose filtering
- Choice of Earth Leakage
- Rated up to 20A
- Choice of termination

Applications

- Electrical and Electronic equipment
- Consumer goods
- Home appliances
- Office equipment

Typical Circuit Diagram



Approvals & Compliances



Technical Specifications

Maximum Continuous Operating Voltage	250 VAC Max
Operating Frequency	50/60Hz
Rated Current	1 to 20A @40°C
Temperature range	-10°C to +40°C
High Potential Test Voltage	Line to Ground: 2250 VDC Line to Line: 1450 VDC

Selection Table

AMI Designation	Input/output Style			Current Rating	Inductance	Capacitance		Resistor	Leakage Current @ 120 VAC 60Hz/250 VAC 50 Hz	TIL Insertion Loss	Case Style
						Cx	Cy				
Available Part Numbers	6.3mm Spade Terminals	Wire Leads	Threaded Bolts	A	mH	nF	pF	K Ω	mA		
						AMI-M11D-1-1-B-1	1				
AMI-M11D-3-1-B-1	-	3	-	1	1.86	740	4700	330	0.4/0.7	001	B
AMI-M11D-1-1-B-2	1	-	-	1	1.86	740	3000	330	0.22/0.38	003	A
AMI-M11D-3-1-B-2	-	3	-	1	1.86	740	3000	330	0.22/0.38	003	B
AMI-M11D-1-3-B-2	1	-	-	1	1.76	940	3000	330	0.22/0.38	003	A
AMI-M11D-1-3-B-1	1	-	-	3	1.76	940	5500	330	0.4/0.7	001	A
AMI-M11D-3-3-B-1	-	3	-	3	1.76	940	5500	330	0.4/0.7	001	B
AMI-M11D-3-3-B-2	-	3	-	3	1.76	940	3000	330	0.22/0.38	003	B
AMI-M11D-1-6-B-1	1	-	-	6	0.516	940	5500	330	0.4/0.7	002	A
AMI-M11D-3-6-B-1	-	3	-	6	0.516	940	5500	330	0.4/0.7	002	A
AMI-M11D-1-6-B-2	1	-	-	6	0.516	940	3000	330	0.22/0.38	004	A
AMI-M11D-3-6-B-2	-	3	-	6	0.516	940	3000	330	0.22/0.38	004	B
AMI-M11D-3-10-B-1	-	3	-	10	0.495	940	5500	330	0.4/0.7	002	B
AMI-M11D-1-10-B-2	1	-	-	10	0.495	940	3000	330	0.22/0.38	004	A
AMI-M11D-3-10-B-2	-	3	-	10	0.495	940	3000	330	0.22/0.38	004	B
AMI-M11D-1-10-B-1	1	-	-	10	0.495	940	5500	330	0.4/0.7	002	A
AMI-M11D-1-20-B-1	1	-	-	20	0.54	940	5500	330	0.4/0.7	002	C
AMI-M11D-6-20-B-1	-	-	6	20	0.54	940	5500	330	0.4/0.7	002	D
AMI-M11D-1-20-B-2	1	-	-	20	0.54	940	3000	330	0.22/0.38	004	C

*M11D-3-10-B-2 & M11D-6-20-B-1 are UL Pending

Case Styles

STYLE A

Typical Dimensions:
 Line/Load Terminals (4): .250 [6.3] with .07 [1.8] Dia. hole
 Ground Terminal (1): .250 [6.3] with .07 x .16 [1.8 x 3.8] slot
 Mounting Holes (2): .188 [4.75] Dia.

STYLE B

Typical Dimensions:
 Line/Load Terminals (4): .250 [6.3] with .07 [1.8] Dia. hole
 Ground Terminal (1): .250 [6.3] with .07 x .16 [1.8 x 3.8] slot
 Mounting Holes (2): .188 [4.75] Dia.

STYLE C

Typical Dimensions:
 Line/Load Terminals (4): .250 [6.3] with .07 [1.8] Dia. hole
 Ground Terminal (1): .250 [6.3] with .07 x .16 [1.8 x 3.8] slot
 Mounting Holes (4): .188 [4.75] Dia.

STYLE D

Typical Dimensions:
 Terminals (5): 8-32, Torque 18 lbf-in. [2.03 N-m] max. ± 2 [22]
 Mounting Holes (2): .188 [4.75] Dia.

Model Number	A max	B max	C max	D $\begin{smallmatrix} \pm .15 \\ \pm .38 \end{smallmatrix}$	E max
AMI-M11D-1-1	3.35"/85.1mm	2.07"/52.6mm	1.16"/29.5mm	2.375"/60.33mm	2.81"/71.4mm
AMI-M11D-3-1	2.07"/52.6mm	2.07"/52.6mm	1.16"/29.5mm	2.375"/60.33mm	2.81"/71.4mm
AMI-M11D-1-3	3.85"/97.8mm	2.07"/52.6mm	1.16"/29.5mm	2.938"/74.63mm	3.35"/85.1mm
AMI-M11D-1-6	3.85"/97.8mm	2.07"/52.6mm	1.16"/29.5mm	2.938"/74.63mm	3.35"/85.1mm
AMI-M11D-3-3	2.56"/65.0mm	2.07"/52.6mm	1.16"/29.5mm	2.938"/74.63mm	3.35"/85.1mm
AMI-M11D-3-6	2.56"/65.0mm	2.07"/52.6mm	1.16"/29.5mm	2.938"/74.63mm	3.35"/85.1mm
AMI-M11D-1-10	3.85"/97.8mm	2.07"/52.6mm	1.32"/33.5mm	2.938"/74.63mm	3.35"/85.1mm
AMI-M11D-3-10	2.57"/65.3mm	2.07"/52.6mm	1.32"/33.5mm	2.938"/74.63mm	3.35"/85.1mm
AMI-M11D-1-20	3.85"/97.8mm	2.58"/65.5mm	1.78"/45.2mm	2.938"/74.63mm	3.35"/85.1mm
AMI-M11D-6-20	3.46"/87.8mm	2.58"/65.5mm	1.78"/45.2mm	2.938"/74.63mm	3.35"/85.1mm

Typical Insertion Loss

According to CISPR17 in 50 Ω system

- Common Mode / Asymmetrical (L-G)
- Differential Mode / Symmetrical (L-L)

