

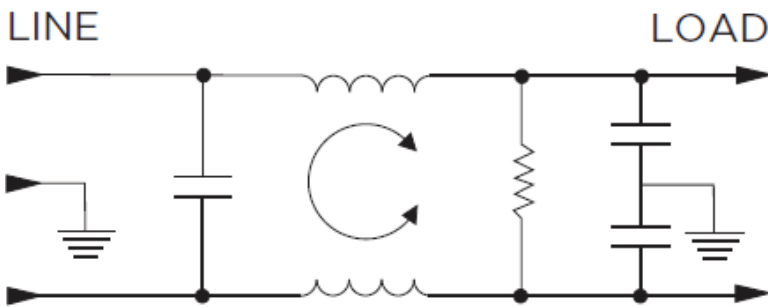
### Features

- General purpose filtering
- Low cost
- Rated up to 30A
- Choice of termination; Faston, Wire leads, Studs

### Applications

- Electrical and Electronic equipment
- Consumer goods
- Home appliances
- Office equipment

### Typical Circuit Diagram



### Approvals & Compliances



### Technical Specifications

Maximum Continuous Operating Voltage	250 VAC Max
Operating Frequency	50/60Hz
Rated Current	1 to 30 A @40°C
Temperature range	-10°C to +40°C
High Potential Test Voltage	Line to Ground: 2250 VDC Line to Line: 1450 VDC

## Selection Table

AMI Designation	Input/output Style			Current Rating	Inductance	Capacitance		Resistor	Leakage Current @ 120 VAC 60Hz/250 VAC 50 Hz	TIL Insertion Loss	Case Style
				A	mH	Cx	Cy	K $\Omega$			
Available Part Numbers	6.3mm Spade Terminals	Wire Leads	Threaded Bolts			nF	pF		mA		
AMI-M11A-1-1-D	1	-	-	1	1.86	9	5500	1500	0.4/0.7	004	A
AMI-M11A-3-1-D	-	3	-	1	1.86	9	5500	1500	0.4/0.7	004	B
AMI-M11A-1-2-D	1	-	-	2	0.539	9	5500	1500	0.4/0.7	005	A
AMI-M11A-3-2-D	-	3	-	2	0.539	9	5500	1500	0.4/0.7	005	B
AMI-M11A-1-3-D	1	-	-	3	1.76	9	5500	1500	0.4/0.7	006	A
AMI-M11A-3-3-D	-	3	-	3	1.76	9	5500	1500	0.4/0.7	006	B
AMI-M11A-1-5-D	1	-	-	5	0.516	9	5500	1500	0.4/0.7	006	A
AMI-M11A-3-5-D	-	3	-	5	0.516	9	5500	1500	0.4/0.7	006	B
AMI-M11A-1-10-D	1	-	-	10	0.495	9	5500	1500	0.4/0.7	007	A
AMI-M11A-3-10-D	-	3	-	10	0.495	9	5500	1500	0.4/0.7	007	B
AMI-M11A-6-10-D	-	-	6	10	0.495	9	5500	1500	0.4/0.7	007	C
AMI-M11A-1-20-D	1	-	-	20	0.44	9	5500	1500	0.4/0.7	008	A
AMI-M11A-6-20-D	-	-	6	20	0.44	9	5500	1500	0.4/0.7	008	C
AMI-M11A-6-30-D	-	-	6	30	0.69	9	5500	1500	0.4/0.7	009	D
AMI-M11A-1-1-B	1	-	-	1	1.86	9	2800	1500	0.21/0.36	001	A
AMI-M11A-1-3-B	1	-	-	3	1.76	9	2800	1500	0.21/0.36	001	A
AMI-M11A-1-2-B	1	-	-	2	0.539	9	2800	1500	0.21/0.36	002	A
AMI-M11A-3-2-B	-	3	-	2	0.539	9	2800	1500	0.21/0.36	002	B
AMI-M11A-3-1-B	1	-	-	3	1.86	9	2800	1500	0.21/0.36	001	B
AMI-M11A-3-3-B	-	3	-	3	1.76	9	2800	1500	0.21/0.36	001	B
AMI-M11A-1-5-B	1	-	-	5	0.5	9	2800	1500	0.21/0.36	002	A
AMI-M11A-3-5-B	-	3	-	5	0.5	9	2800	1500	0.21/0.36	002	B
AMI-M11A-1-10-B	1	-	-	10	0.495	9	2800	1500	0.21/0.36	002	A
AMI-M11A-3-10-B	-	3	-	10	0.495	9	2800	1500	0.21/0.36	002	B
AMI-M11A-1-20-B	1	-	-	20	0.44	9	2800	1500	0.21/0.36	003	A

## Case Styles

**STYLE A**

Typical Dimensions:  
 Line/Load Terminals (4): .250 [6.3] with .07 [1.8] Dia. hole  
 Ground Terminal (1): .250 [6.3] with .07 x .16 [1.8 x 3.8] slot  
 Mounting Holes (2): .188 [4.75] Dia.

**STYLE B**

Typical Dimensions:  
 Wire leads (5): 4.0 [101.6] Min., AWG18 (AWG16 for 10A)  
 Mounting Holes (2): .188 [4.75] Dia.

**STYLE C**

Typical Dimensions:  
 Line/Load Terminals (4): .250 [6.3] with .07 [1.8] Dia. hole  
 Ground Terminal (1): .250 [6.3] with .07 x .16 [1.8 x 3.8] slot  
 Mounting Holes (4): .188 [4.75] Dia.

**STYLE D**

Typical Dimensions:  
 Terminals (5): 8-32, Torque 18 lbf-in. [2.03 N-m] max. ± 2 [22]  
 Mounting Holes (2): .188 [4.75] Dia.

## Mechanical Dimensions:

Model Number	A max	B max	C max	D $\begin{smallmatrix} \pm .015 \\ \pm .38 \end{smallmatrix}$	E max
AMI-M11A-1-1 AMI-M11A-1-2	2.25"/57.2mm	1.82"/46.2mm	0.66"/16.8mm	2.125"/53.98mm	2.53"/64.3mm
AMI-M11A-3-1 AMI-M11A-3-2	0.96"/24.4mm	1.82"/46.2mm	0.66"/16.8mm	2.125"/53.98mm	2.53"/64.3mm
AMI-M11A-1-3 AMI-M11A-1-5	2.61"/66.3mm	1.82"/46.2mm	0.78"/19.8mm	2.125"/53.98mm	2.53"/64.3mm
AMI-M11A-3-3 AMI-M11A-3-5	1.32"/33.5mm	1.82"/46.2mm	0.78"/19.8mm	2.125"/53.98mm	2.53"/64.3mm
AMI-M11A-1-10 AMI-M11A-3-10	2.61"/66.3mm 1.32"/33.5mm	1.82"/46.2mm	1.16"/29.5mm	2.125"/53.98mm	2.53"/64.3mm
AMI-M11A-6-10	2.72"/69.1mm	1.82"/46.2mm	1.16"/29.5mm	2.125"/53.98mm	2.53"/64.3mm
AMI-M11A-1-20 AMI-M11A-6-20	3.36"/85.3mm 3.46"/87.9mm	2.07"/52.6mm	1.16"/29.5mm	2.375"/60.33mm	2.81"/71.4mm
AMI-M11A-6-30	5.34"/135.6mm	3.38"/85.9mm	1.53"/38.9mm	3.75"/95.3mm	4.20"/106.7mm

## Typical Insertion Loss

According to CISPR17 in 50 Ω system

— Common Mode / Asymmetrical (L-G)  
— Differential Mode / Symmetrical (L-L)

